



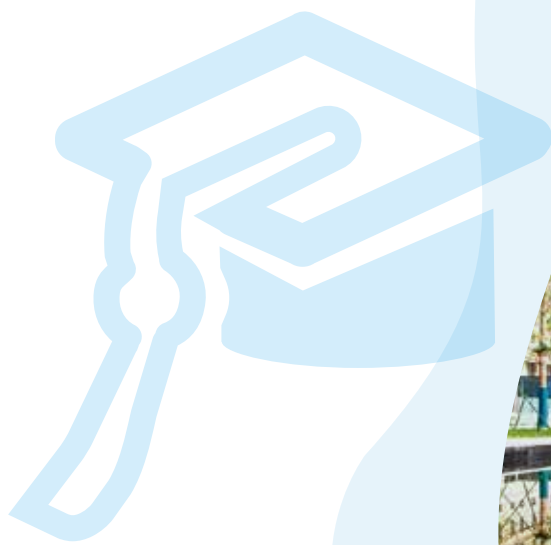
西安交通大学
XI'AN JIAOTONG UNIVERSITY

XI'AN JIAOTONG UNIVERSITY

SCHOLARSHIPS PROGRAMS FOR

POSTGRADUATE STUDIES

2020/2021



XJTU

Xi'an Jiaotong University (XJTU), established in 1896, is the national key University directly administered by the Ministry of Education of China. It is the top 10 Research University in China and member of China's Ivy League --- C9 League. It was ranked No. 307 on the list of QS World University Rankings 2020.

XJTU is a comprehensive research university with **10 major categories of disciplines**: science, engineering, medicine, economics, management, humanities, law, philosophy, education and art, and 26 schools, 9 colleges for undergraduates and **20 affiliated teaching hospitals**. There are **four campuses**, namely Xingqing campus, Yanta campus, Qujiang campus and China Western Science and Technology Innovation Harbor, with a total area of 5.3 square kilometers.

The University has a faculty and staff of 6137 people including 3,081 full-time teachers, of whom **44 are academicians** of the Chinese Academy of Sciences and/or the Chinese Academy of Engineering. The University now has 40346 full-time students, including 19629 postgraduates.

XJTU offers 87 undergraduate majors, and there are 32 first-level disciplines authorized to confer doctorate degrees, and 43 disciplines authorized to confer master's degrees. It also offers English-taught bachelor's programs, master's as well as doctorate programs in different disciplines.

According to the data released by Essential Science Indicators (ESI), engineering of XJTU is ranked **top 1‰** on the ESI list, other 14 disciplines of XJTU are ranked **top 1%** on the ESI list up to March, 2018. Its **Management School and Law School are accredited for the QS FIVE STARS** respectively in 2016 and in 2018. 14 disciplines are ranked **top ten** in China, such as Electrical Engineering, Mechanical Engineering, Power Engineering and Engineering Thermophysics, Materials Science, Electronics and Information Engineering etc.

XJTU established extensive international communication ties with about 300 universities and research institutions from 44 countries and regions. It initiated the **University Alliance of the Silk Road** and built an international platform of educational cooperation and communication for more than 154 universities of 39 countries and regions. Currently, there are over 3000 international students from over 139 countries and regions studying at XJTU. Due to its outstanding education quality, the University was awarded by the Ministry of Education of China as the **"Demonstration Base for International Education"**.

The University is located in **Xi'an**—the geographical center of China, the starting city of Silk Road as well as the capitals of 13 dynasties in Chinese history. It is not only home to Terra Cotta Warriors and Horses and Huashan Mountain but also home to more than 100 world top 500 companies' branches. It is a hub of AI, aerospace, biotechnology, photoelectric chip, information technology, new materials, new energy, intelligent manufacturing etc. Its brilliant History, glorious culture, high-end technology and friendly environment for realizing the dreams bring Xi'an into one of the most selected destinations for study in China.

Welcome to apply for XJTU!

School Motto: Diligent in Study, Persistent in Ambition, Determined in Action, Competent in Work



Scholarships

1. **Chinese Government Scholarship**
A waiver of tuition fee, Free on-campus dormitory accommodation, Monthly living allowance, Comprehensive Medical Insurance for International Students in China.
 2. **XJTU Siyuan International Student Scholarship**
A waiver of tuition fee, Monthly living allowance.
 3. **XJTU-Xi'an City Government "Belt and Road" International Student Scholarship**
A waiver of tuition fee, Monthly living allowance.
- Notes:**
- a) Accommodation, comprehensive medical insurance are NOT included in XJTU Siyuan International Student Scholarship and XJTU-Xi'an City Government International Student Scholarship.
 - b) All the scholarships laureates must take the **Scholarship Annual Review** to confirm the next year's scholarship status and/or level after being admitted.
 - c) The Annual Review Result of Chinese Government Scholarship may result in the following scholarship status: funding, suspension or cancellation.
 - d) The Annual Review Result of XJTU Siyuan International Student Scholarship and XJTU-Xi'an City Government "Belt and Road" International Student Scholarship may result in funding, suspension, cancellation or change of allowance level.

Application Schedule

Online application: November 15th, 2019 -- March 15th, 2020
Deadline for payment: March 21st, 2020

Duration of Program

Master's degree: 2~3 years

Doctoral degree: 3~6 years

The university may decide to add one year Chinese language study prior to the academic study according to the applicants' Chinese language proficiency.

Eligibility

1. Applicants must be non-Chinese citizens with valid passports;
2. Applicants must be in good health;
3. Applicants for Master's degree must have a Bachelor's degree and be under 35 years of age, Applicants for Doctoral degree must have a Master's degree and be under 40 years of age;
4. Applicants may not be in receipt of any other types of scholarship.

Application Procedure

Step 1. Online application at CSC website at <http://www.campuschina.org/>. Download the completed Application Form for Chinese Government Scholarship, print and sign your name.

Program Type: B

Agency No. : 10698

Step 2. Online application at Xi'an Jiaotong University's International student application system at <https://xjtu.17gz.org/member/login.do>

Please check **Application Documents** for the detailed checklist and prepare corresponding documents.

Step 3. Pay the application fee and upload the bank remittance into XJTU online application system.(The university will send payment notice for application through system information/email to those who pass the initial review.)

Step 4. Application complete.

Notes:

- a) Application fee is 800RMB which is non-refundable. Bank transfer is the only acceptable way.
- b) Online application is the only way to submit the application. Hard copies are unacceptable.

Application Documents

All documents must be complete, true, and correct in either Chinese or English.

1. **Application Form for Chinese Government Scholarship**
Downloaded after online application in CSC system.
2. **XJTU Application Form for International Students**
Automatically formed after online application in XJTU system.
3. **Completed Original Physical Examination Record for Foreigners and Blood Test Report**
The physical examination must cover ALL the items listed in form. The forms with incomplete records or without the suggestion and signature of the attending physician, official cross-edge stamp of the hospital or a sealed photograph of the applicant are invalid. Please select the appropriate time to take physical examination as the result is valid for only 6 months.
4. **Original Non-criminal Record**
5. **Original Highest Diploma and Its Notarized Copies**
(Prospective diploma winners must submit official certificate from their current university.)
6. **Original transcripts in undergraduate or graduate period and their notarized copies**
7. **Recommendation Letters**
Two original recommendation letters written by professors or associate professors. If applicants have already got provisional acceptance from professors in XJTU, please ask this professor to issue a recommendation letter in the required format. Click here to download the pattern
8. **A Study Plan or Research Proposal**
Applicants must submit a written study plan or research proposal in English or Chinese, with a minimum of 800 words for Master degree and 1500 words for Doctoral degree.
9. **Original Research Achievements and Notarized Copies**
Applicants may submit published research papers, award certificates or other documents to prove their achievement and ability in academic research if any.
10. **Certificate of Language Proficiency**
Chinese-taught programs: Report of HSK 5 180 points and above. Other language proficiency certificate is also acceptable upon approved by XJTU.
English-taught programs: transcript of IELTS 6.0 and above, TOEFL 80 and above. Other language proficiency certificate is also acceptable upon approved by XJTU.
11. **Photocopy of Valid Ordinary Passport**
12. **Remittance Slip of Application Fee**

Notes:

- a) No application documents mentioned above will be returned whether the application is successful or not.
- b) Incomplete Applications will be rejected.
- c) Notarized Chinese/English versions are required for documents with languages other than the two.

Admission Notification

1. **Applicants for Chinese Government Scholarship will be automatically listed as applicants for XJTU Siyuan International Student Scholarship and XJTU-Xi'an City Government "Belt and Road" International Student Scholarship. Applicants don't have to apply for the latter two again.**
2. Admission will be given to the outstanding candidates based on the **comprehensive review results of application documents, interview etc.** The university will decide which scholarship or allowance level to be granted according to the ranking of comprehensive review results as well as the seats of each scholarship in that year.
3. Make sure your email, telephone number, postal address correctly be filled in the application system as they are key to get you contacted during the admission process. Failure to respond to the university in time as required may lead to automatic rejection.
4. Applicants **cannot** change the major, study duration and teaching language once they get admitted.
5. The university will provide Admission Notice, JW201/202 form (Visa form) for the admitted applicants to applying for X visa to coming to China. Those who are with other types of visa will not be allowed for registration at XJTU.
6. Admitted applicants should register at XJTU strictly in accordance with the date, place prescribed on the Admission Notice (usually on September). Failure to do so within two weeks will result in the admission and scholarship status being invalid.
7. Please bring the **original highest diploma and original Physical Examination Record for Foreigners and Blood Test Report when you come to XJTU for registration. Otherwise, the admission and scholarship status will be canceled.**

Contact Information

Xingqing Campus
Admission Office for International Students
School of International Education, Xi'an Jiaotong University
No.28, Xianning West Road, Xi'an, Shaanxi, 710049, P.R. China
E-mail: adm-sie@mail.xjtu.edu.cn

China Western Science and Technology Innovation Harbor
Admission Office for International Students
1-2096, Building No.1, Iharbor
E-mail: adm-sie@mail.xjtu.edu.cn

Yanta Campus
International Student Affairs Office, Yanta Campus
School of International Education, Xi'an Jiaotong University
No.76 Yanta West Road, Xi'an, Shaanxi, 710061, P.R.China
E-mail: mbbs-adm@mail.xjtu.edu.cn

Chinese-Medium Programs



Master's Programs

3 Years

School of Mechanical Engineering: Mechanical Engineering, Instrument Science and Technology

School of Energy and Power Engineering: Power Engineering and Engineering Thermophysics, Nuclear Science and Technology

Faculty of Electronic and Information Engineering: Electronic Science and Technology, Information and Communications Engineering, Control Science and Engineering, Computer Science and Technology, Cyberspace Security

School of Chemical Engineering and Technology: Chemical Engineering

School of Public Policy and Administration: Public Administration

School of Science: Material Science and Engineering, Physics, Chemistry

Frontier Institute of Science and Technology: Physics, Chemistry, Biology, Material Science and Engineering, Chemical Engineering and Technology, Biomedical Engineering

School of Human Settlements and Civil Engineering: Environmental Science and Engineering, Civil Engineering, Architecture

School of Humanities and Social Sciences: Philosophy, Sociology, Journalism and Communication (Chinese Cultural Studies, 2years)

School of Software Engineering: Computer Science and Technology

School of Mathematics and Statistics: Mathematics, Statistics



Doctoral Degree Programs

3 Years

School of Mechanical Engineering: Mechanical Engineering, Instrument Science and Technology

School of Energy and Power Engineering: Power Engineering and Engineering Thermophysics, Nuclear Science and Technology

Faculty of Electronic and Information Engineering: Electronic Science and Technology, Information and Communications Engineering, Control Science and Engineering, Computer Science and Technology, Cyberspace Security

School of Law: Law and Governance

School of Public Policy and Administration: Public Administration

School of Science: Material Science and Engineering, Physics, Chemistry

School of Marxism: Theory of Marxism

Frontier Institute of Science and Technology: Physics, Chemistry, Biology, Material Science and Engineering, Chemical Engineering and Technology, Biomedical Engineering

School of Human Settlements and Civil Engineering: Earth and Human Settlement Environment Science and Engineering

School of Humanities and Social Sciences: Philosophy, Social Development and Management

School of Software Engineering: Computer Science and Technology

School of Life Science and Technology: Biology, Biomedical Engineering

School of Mathematics and Statistics: Mathematics, Statistics



English-Medium Programs



Master's Programs

Most Engineering, Science, Business, Literature & Arts programs are 2 years. Medical programs 3 Years.

School of Mechanical Engineering: Mechanical Engineering, Instrument Science and Technology

School of Energy and Power Engineering: Power Engineering and Engineering Thermophysics, Nuclear Science and Technology

Faculty of Electronic and Information Engineering: Electronic Science and Technology, Information and Communications Engineering, Control Science and Engineering, Computer Science and Technology

School of Materials Science and Engineering: Materials Science and Engineering

School of Electrical Engineering: Electrical Engineering

School of Management: Business Administration, Management Science and Engineering

School of Aerospace Engineering: Mechanics, Aeronautical and Astronautic Science and Technology

Jinhe Economics Research Center: Applied Economics

School of Economics and Finance: Applied Economics

School of Law: Law in Chinese and International Business Law

School of Marxism: Theory of Marxism (Study of China's Reform and Development)

School of Life Science and Technology: Biomedical Engineering (3 Years)

Health Science Center: Physiology, Neurobiology, Genetics, Cell Biology, Biochemistry and Molecular Biology, Biophysics, Human Anatomy Histology and Embryology, Immunology, Pathogenic Biology, Pathology and Pathophysiology, Forensic Science, Epidemiology and Health Statistics, Occupational and Environmental Health, Nutrition and Food Hygiene, Maternal Child and Adolescent Health, Hygiene Toxicology, Medicinal Chemistry, Pharmaceutics, Pharmacognosy, Pharmaceutical Analysis, Pharmacology, Natural Pharmaceutical Chemistry, Discipline of Pharmacy Administration, Nursing, Internal Medicine, Pediatrics, Geriatric Medicine, Neurology, Psychiatry and Mental Health, Dermatology and Venereology, Imaging and Nuclear Medicine, Clinical Laboratory Diagnostics, Surgery, Obstetrics and Gynecology, Ophthalmology, Otorhinolaryngology, Oncology, Rehabilitation and Physiotherapy, Anesthesiology, Emergency medicine, Stomtological Medicine



Doctoral Degree Programs

3 Years

School of Mechanical Engineering: Mechanical Engineering, Instrument Science and Technology

School of Energy and Power Engineering: Power Engineering and Engineering Thermophysics, Nuclear Science and Technology

Faculty of Electronic and Information Engineering: Electronic Science and Technology, Information and Communications Engineering, Control Science and Engineering, Computer Science and Technology

School of Materials Science and Engineering: Materials Science and Engineering

School of Electrical Engineering: Electrical Engineering
School of Management: Business Administration, Management Science and Engineering

School of Aerospace Engineering: Mechanics, Aeronautical and Astronautic Science and Technology

School of Chemical Engineering and Technology: Chemical Engineering and Technology

Jinhe Economics Research Center: Applied Economics

School of Economics and Finance: Applied Economics

Health Science Center: Physiology, Neurobiology, Genetics, Cell Biology, Biochemistry and Molecular Biology, Biophysics, Human Anatomy Histology and Embryology, Immunology, Pathogenic Biology, Pathology and Pathophysiology, Forensic Science, Epidemiology and Health Statistics, Occupational and Environmental Health, Nutrition and Food Hygiene, Maternal Child and Adolescent Health, Hygiene Toxicology, Medicinal Chemistry, Pharmaceutics, Pharmacognosy, Pharmaceutical Analysis, Pharmacology, Natural Pharmaceutical Chemistry, Discipline of Pharmacy Administration, Nursing, Internal Medicine, Pediatrics, Geriatric Medicine, Neurology, Psychiatry and Mental Health, Dermatology and Venereology, Imaging and Nuclear Medicine, Surgery, Obstetrics and Gynecology, Ophthalmology, Otorhinolaryngology, Oncology, Rehabilitation and Physiotherapy, Anesthesiology, Emergency medicine